



AVEVA

BROCHURE

---

# AVEVA Workflow Management

Drive higher levels of productivity through digital transformation and standardization of business processes and operational workflows

AVEVA Workflow Management provides digital workflow and mobile extensions to connect people and systems for collaboration in a governed manner and to manage and execute works and business processes more effectively and intelligently.

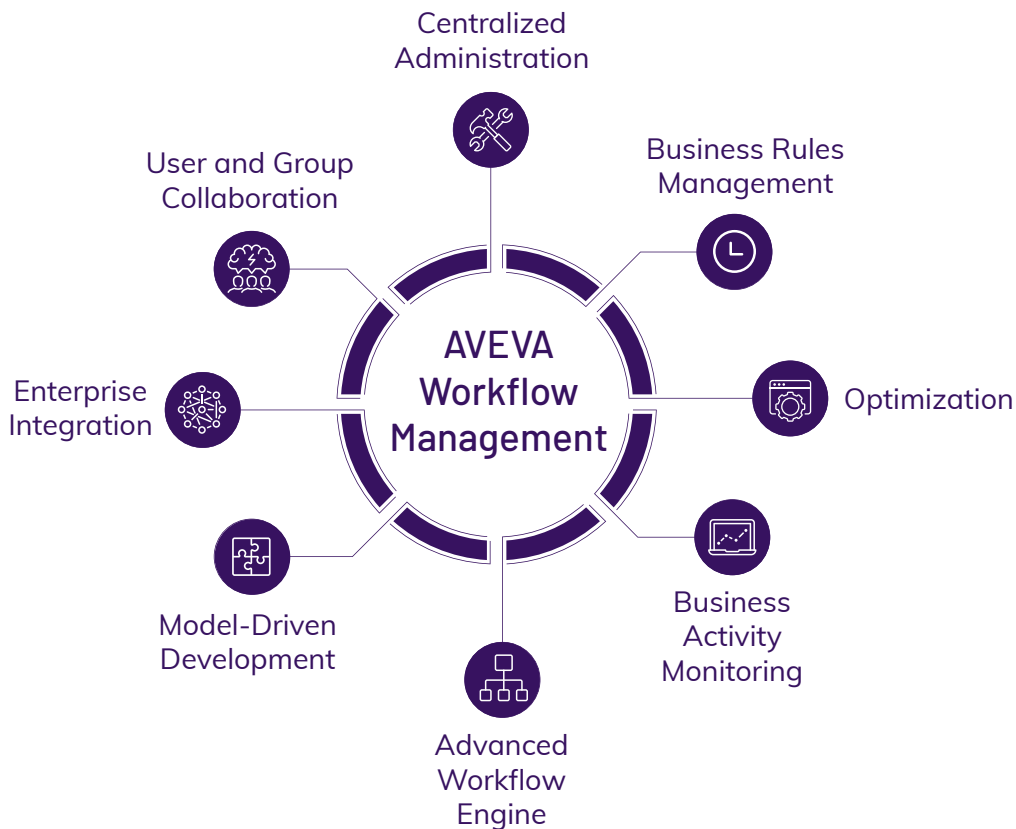
# Overview

AVEVA Workflow Management is advanced business process and workflow management software to manage process flows that include people and systems inside or outside an organization. It enables companies to model, execute, monitor, analyze and improve processes to drive higher levels of efficiency, productivity and responsiveness.

The software provides a configurable platform and a sophisticated low code forms environment. This model driven approach empowers non-IT users and business stakeholders to visually compose workflows, monitor and measure the performance, quickly improve processes, and adapt change.

Digital workflow management empowers users with access to notifications, information and tasks anytime, anywhere in an access-controlled environment at the tip of their finger on their phones, through e-mails or through using a browser on their desktop computer.

The web-based architecture offers scalability and includes rich capabilities to integrate with business applications, third-party systems, many data sources, and comes with connectivity to enterprise applications such as Microsoft SharePoint, Microsoft Outlook and Microsoft Office; all at a low total cost of ownership. Support for the Advanced Message Queue Protocol and Microsoft Azure Logic Apps offers generic interoperability with enterprise applications on premise or in the cloud. The AVEVA software platform and applications allow to connect with plant systems and devices for taking the benefits of business process management to industrial infrastructure and manufacturing operations.





## AVEVA Workflow Management for Business Processes

Enterprises today are faced with unique challenges in a highly competitive market place and need to demonstrate business innovation while staying agile and responsive to customer needs. Digital business process management empowers enterprises to model, automate, monitor, analyze and streamline business processes. AVEVA Workflow Management provides a robust BPM application development platform which enables solutions for core business functions (HR, Accounts, Payroll, etc.) as well as customized applications for addressing various individual business challenges.

- Increase operational performance, compliance and customer satisfaction
- Engage and empower process stakeholders with a digital user experience
- Monitor, analyze and continuously improve business processes
- Improve your agility to adapt business change
- Complement and increase the ROI of your existing IT infrastructure.

## AVEVA Workflow Management for Manufacturing Operations

Integration with AVEVA's industrial software platform and applications provides a unique workflow management and mobile extension for systematic collaboration across people, applications and devices (IOT devices & traditional plant devices). It allows for a process centric approach to the digital transformation of best practices enabling reuse, sustainable standardization and continuous improvement in single and multi-site operations.

- Replace paper documents and mitigate risks associated with manual processes
- Digitally transform work and enforce standard operating procedures
- Establish systematic collaboration across teams and operational domains
- Manage complex resource and organization calendar schedules
- Monitor, measure and improve the performance of work processes
- Enforce and document regulatory compliance
- Package workflows for import and adaptable reuse in another instance of the Software



## AVEVA Workflow Management for Mobile Solutions

Enable true mobility across the Enterprise with anytime, anywhere access to business processes and for managing work task execution on mobile devices. A mobile application for multiple mobile platforms allows to empower users who are on the move and to keep your mobile workforce connected with mission-critical processes while ensuring their interactions with or without network connectivity.

- Secure correct and consistent execution of tasks and empower the workforce with a digital user experience on mobile devices
- Transform paperwork into digital forms with automatic adoption to multiple mobile device form factors
- Enable collaboration among central functions and process stakeholders working in the field.

## AVEVA Workflow Management for ISVs/OEMs

AVEVA Workflow Management software is a fully embeddable BPMS with a rich set of data structures and APIs ensuring a seamless integration experience. The software's white labelling capabilities empowers Independent Software Vendors (ISVs) and Original Equipment Manufacturers (OEMs) to use their own brand for software solutions with powerful business process management functionalities under the hood.

- 100% embeddable workflow framework for rapid integration
- XML variable user interface/web services
- Human workflow services for enhanced task, identity and user management
- Powerful workflow engine with native clustering and load balancing capabilities
- Seamless integration with Microsoft offerings such as SharePoint, Exchange and other Microsoft technologies

# Key Features

## Enterprise Console

A central system and process management environment including process design, monitoring and analysis.

- Process repository
- Process integration

## Process Designer

- Intuitive, visual web-based modeling environment
- Many out-of-the-box configurable workflow activities for common workflow tasks
- Supports complex branching and decision trees
- Process drawings can be imported from Microsoft Visio

## Forms Designer

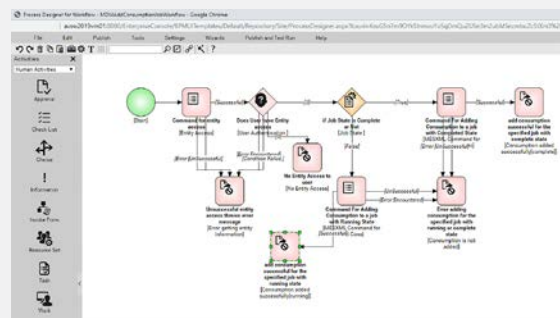
- A patented low code forms design tool to create simple or complex web form layouts with smart controls
- Design friendly canvas with direct drop, better scroll, and device previews
- Unified user experience across all devices with an adaptive layout
- Responsive design and cross browser compatibility
- Integration with lists and workflows to enable rapid deployment of business applications
- Manage versioning and security of forms

## Electronic Signatures

- Ensure regulatory compliance with electronic signatures
- Track multi-level requests through response collaboration
- Collect handwritten Signatures on touch screen devices

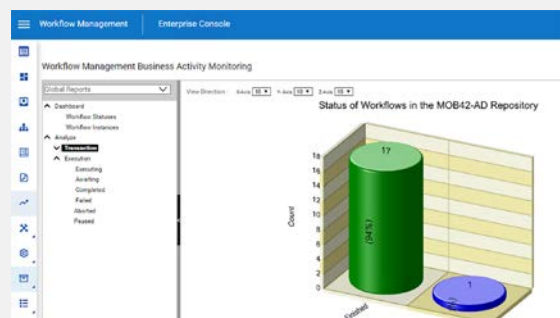
## Business Activity Monitoring (BAM)

- Out-of-the-box reporting and activity monitoring views
- Associate workflows with BAM events
- Customizable Key Performance Indicators (KPIs)
- Performance Analysis
- Dashboard which highlights workflow status and workflow instances
- Proactive alerts of Business Exceptions and KPIs
- Built-in BAM Analyzer for Transaction and Execution
- BAM configuration in list context menu
- Configurable data points and KPIs for comprehensive reports.



Process Designer

Forms Designer



Business Activity and KPI Monitoring

## Mobile Extension

Work Tasks pro is an easy-to-use mobile application for AVEVA Workflow management and lets users perform their tasks on the move.

## Act upon a Process Related Task

The Work Tasks application is a powerful mobile extension that delivers true collaboration for distributed teams. Users can act upon urgent tasks and maintain work continuity through the application.

The categories screen helps the user understand the pending approvals, the forms that are in use, the flagged items and any information pertinent to a process being run in the company.

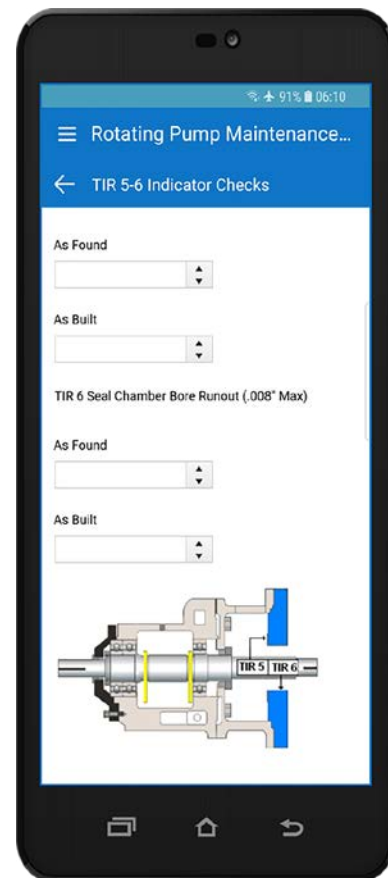
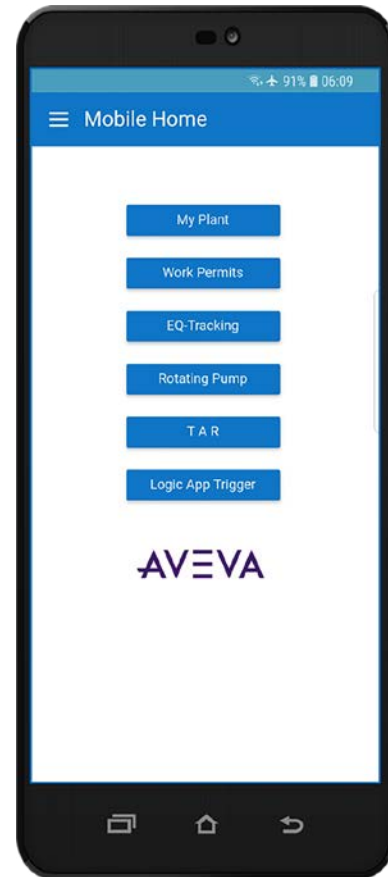
Users can approve or reject a request from anywhere and at any time to ensure optimized work output. The application also allows users to search old or current work items from any category, allowing cross referencing of tasks to make informed decisions. The search feature ensures that items are fetched from both the Server as well as from downloaded work items.

## Push Notifications

Staying connected to mission critical processes makes it imperative to view and act upon events as they occur. The Work Tasks application displays notifications and the count of tasks that are pending for action. The application empowers users by allowing them to view, prioritize and act upon important tasks.

## Connectivity

The Work Tasks application allows Work items that are downloaded on to the device to be viewed offline in the event of loss of connectivity or unavailability of a network connection. Users can continue to review and make process related decisions. Logging into the application then loads the latest work items.



## Implementation and Development

Model driven development framework

- 100% embeddable workflow framework for rapid integration
- XML Variable user interface
- Human Workflow Services
- Native integration with Microsoft Outlook
- Multi-level organization and resource calendars
- Native clustering and active-active load balancing

## Collaboration and Communication

- Microsoft Outlook integration for task delivery and response
- Multi-channel task delivery – web, email, smart phone
- Integration with Microsoft SharePoint Server, Active Directory and third-party directories
- Delivers tasks to SharePoint lists
- Advanced queue management for flexibility in setup, task allocation and management to achieve optimum utilization of resources
- Multi-level, hierarchical calendars for collaboration between users across time zones, geographical locations, regions, departments and functions

## SAP Integration

Built on top of Microsoft LOB adapter (to be acquired separately) for no code integration with SAP for business processes

- Integrate with any module of SAP using RFCs
- Business users can build workflows for SAP
- Read tables / data from SAP system by calling BAPIs/RFCs
- Update/push data in SAP system by calling BAPIs/RFCs

## Security

- Define user-based access rights for workflow execution and design functions
- Leverage built-in workflows to collaborate during process and form design
- Define security at item, folder and other levels
- Comprehensive security for reporting and BAM

The top screenshot displays the 'Edit Web API Lookup' form. It includes a 'Lookup List' sidebar on the left. The main form has fields for 'Title' (set to 'TarLookup'), 'Description', 'Web API' (set to 'Turnaround'), and 'Request URI' (set to 'api/tar/turnaround'). Below these is a 'Selected Columns' section with a table for defining columns and their data types. The table has columns for 'id', 'index', 'guid', and 'value', each with a 'Data Type' dropdown set to 'String'. There are also 'Display Column' and 'Value' dropdowns set to 'SerialLocation', and a 'Display Value Column in Grid?' checkbox set to 'Yes'. An 'Update' button is at the bottom right.

The bottom screenshot displays the 'New SAP Connection' form. It includes a 'SAP Connections' sidebar on the left. The main form has fields for 'Title' (set to 'MySAPConnection'), 'Description' (set to 'Connection to the main SAP System'), 'Application Server' (set to 'HU47RZ11'), 'SAProuter String' (set to 'm/mrz/saprouter.test.com/m/'), 'System ID' (set to 'mrz2'), 'System Number' (set to '15'), 'Client' (set to '800'), 'User Name' (set to 'WWDC\SAPUser'), 'Password' (masked with asterisks), and 'Language' (set to 'DE'). 'Test Connection' and 'Save' buttons are at the bottom right.

## Workflow Management Object Access

- Highly secure and rights-based calling of external .NET assemblies
- Consume external .NET assemblies in Process Designer without creating a custom activity
- Reuse existing objects within processes
- Access objects without writing wrappers or custom code
- Enables just-in-time activation of objects within processes
- Access from GAC (Global Assembly Cache) or local folder

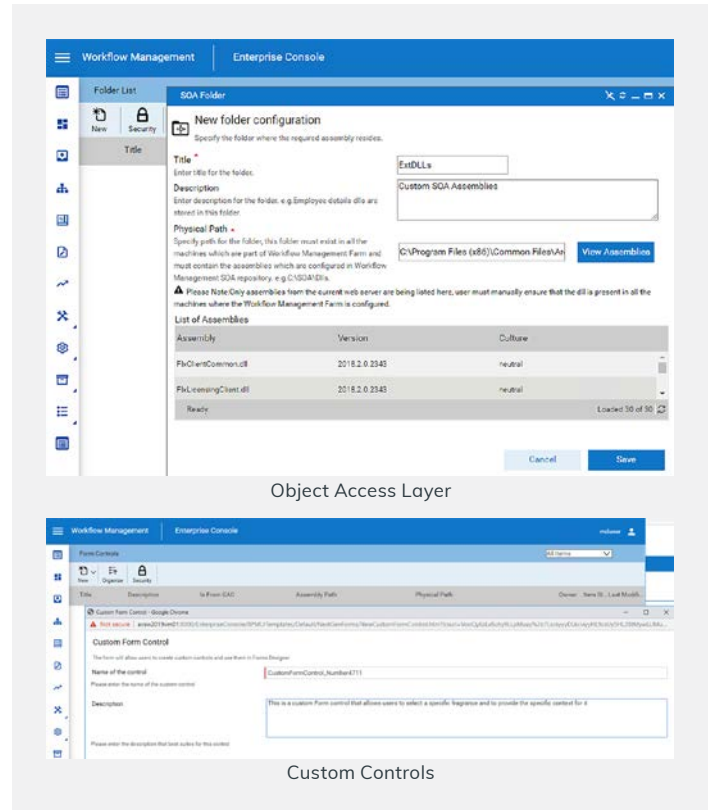
## Object Access

In a business environment, different software and processes are in place. Most of the information is interchanged between software and departments. In many cases, this information is manually incorporated. This process is time consuming and prone to human errors. To automate data exchange in such an environment, the software applications need to interact with each other. Workflow Management facilitates this through integration activities, which knowledgeable users can leverage. Workflow Management Object Access allows users to use their existing .net assemblies with Workflow Management's built in security features so that only privileged users are authorized to access critical information. To enable the feature, certain configuration needs to be done to the setup in Workflow Management such as Folders and Assemblies. Also, one needs to instantiate a class in a workflow to use the methods and properties in workflow activities via the expression editor.

## Custom Controls

The Custom Controls feature in Forms supports advanced Form features which can be created by the user:

- Customize Form features to specific business needs
- Blend custom controls with AVEVA Workflow management Forms Architecture

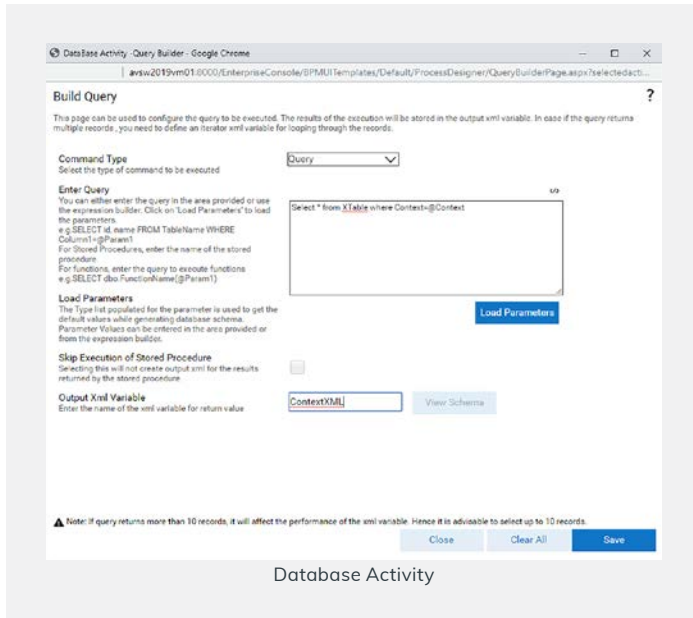




## Database Activity

The database activity enables execution of queries, stored procedures and functions from the workflow. This activity enables to:

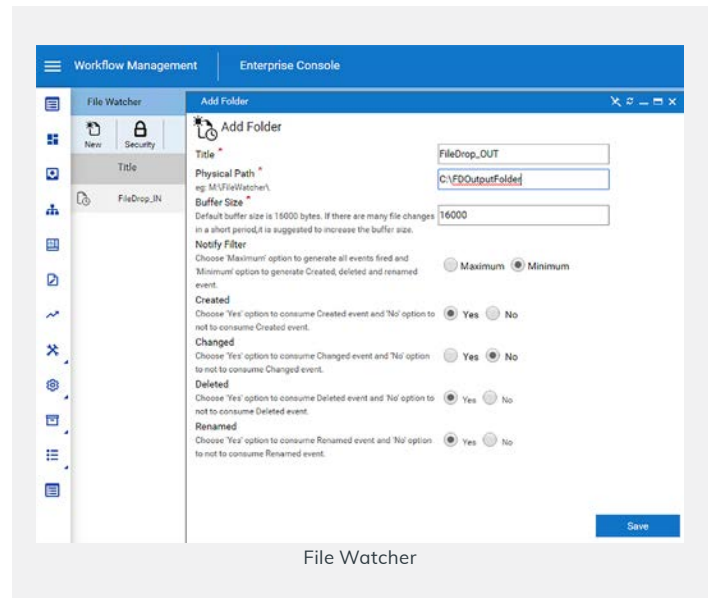
- Establish connections with the database server
- Retrieve or update data in the database
- Get schemas of database tables according to a query



Database Activity

## File Watcher

- Reliable file related events
- Special logic to eliminate false file events
- Bind File Events to processes
- Integrate paperless processes
- Associate Workflows with file watcher events
- Monitor a folder for different file events
- Access file details as XML variables inside workflow
- Move files from one location to another (Physical, SharePoint and FTP)



File Watcher

# Testimonials

---

“Servicing more than 500 customer projects valued at over \$500 billion across over 50 countries with over 70,000 users, Coreworx customers rely on our extensive experience with major capital project best practices, and our proven track record of improving process performance throughout the entire project lifecycle.

Embedding AVEVA’s BPM software has been a key factor and has enabled us to turn industry best practices into automated solutions to help our customers be more agile and efficient.

Our customers’ successes depend on them receiving the right information, at the right time, and in the right context. The underlying BPM software framework help us automate existing business practices, so our customers can have increased visibility into mission critical business processes, and the ability to rapidly adapt to meet unique demands of every critical project.”

Erik Vander Ahe  
SVP Operations and Development, Coreworx Inc.

“AVEVA Workflow Management helped us achieve an ROI of 20% by identifying unmanaged process areas, automating and integrating them naturally in uncontrolled business situations largely affected by the global economic crisis existing today.”

Astimen Fe  
MIS Manager, ICON+

“AVEVA Workflow Management has an excellent visual component that allows quick and easy design of workflows. It easily integrates other steps into the workflow process. I could tell it was written by experienced programmers who know what they are doing.”

Greg Robinson  
Marketspace Monitor Group

“We sought an embedded solution with a thin-client designer and finally found one in AVEVA Workflow Management that actually exceeded and continues to exceed our expectations. More importantly than the technology, we have found an OEM partner who sees our success as their own success and this positive relationship with AVEVA has enabled us to move farther and faster in the marketplace with confidence.”

Harold Engstrom  
CEO, Innovative Process Solutions, Inc.

“Before the EMS system went in, I was spending about 15 or more hours manually reviewing the GMP packs. After the system, I went from hours to minutes. The key benefits of the system are the electronic signatures with the review by exception, and not having to worry about missing papers or chart recorders. The system has just made my life a whole lot easier.”

Rachael Vinjamuri  
Lead Manufacturing Document Analyst, Fujirebio Diagnostics, Inc.

For information please visit:

<https://sw.aveva.com/operate-and-optimize>

