

## echolink S7-compact

Compact Adapter for Communication with S7 PLCs

echolink S7-compact offers a fast and easy connection to Siemens S7 controllers. It supports programming, configuration and visualization applications, such as STEP7, WinCC, OPC Servers, etc., to benefit from a robust and cost-effective access to up to 32 automation devices simultaneously.

### **ONE ADAPTER FOR ALL CONTROLLERS AND APPLICATIONS**

Softing Industrial Automation's echolink S7-compact is a communication and programming adapter for conveniently connecting a computer to S7-200, S7-300 and S7-400 controllers. Due to its compatibility with Siemens STEP7, WinCC and WinCC flexible, the echolink S7-compact is a robust and cost-effective alternative to conventional programming adapters or communications processors (CP).

### **ETHERNET ACCESS TO SIEMENS S7 CONTROLLERS**

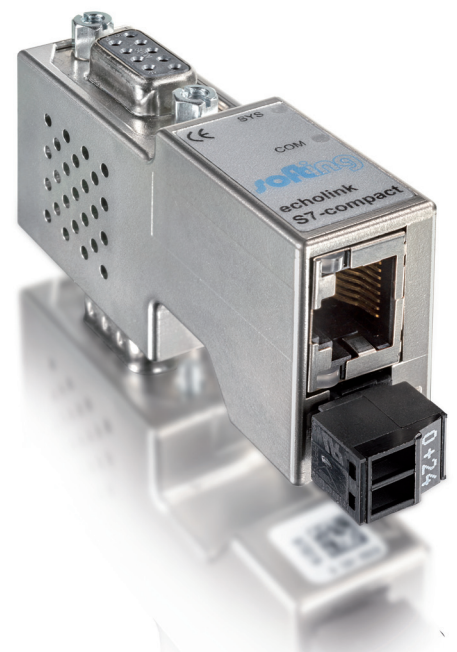
echolink S7-compact has a 10/100MBit Ethernet interface and integrates into any TCP network structure. This communication adapter is able to maintain up to 16 Ethernet connections simultaneously. It connects to the PLC via MPI or PROFIBUS. The current bus settings are detected automatically.

### **COMPACT DESIGN**

The compact design allows to plug the adapter directly onto the PLC. The echolink S7-compact can be powered by the controller or connected to an external power supply. Using Softing's NetCon configuration software, all echolink S7-compact adapters in the network can be configured from one PC, providing the possibility to browse each echolink S7-compact in the network and to configure it remotely.

### **CUSTOMER BENEFITS**

- > One Adapter for All Controllers and Applications
- > Remote Access to Siemens PLC's Via Ethernet
- > Compact Design



## TECHNICAL DATA

Hardware Requirements	Ethernet Interface
PC Connection	RJ45
Supported Controllers	Siemens S7-200, Siemens S7-300, Siemens S7-400
Supported Bus Systems	PROFIBUS, MPI
Communication Type	Ethernet 100BASE-TX/10BASE-T
Supported Transfer Rates to PLC	9.6KBit/s..12MBit/s With Automatic Detection
Supported Transfer Rates to PC	10/100MBit/s
Simultaneous Connections	16 TCP/IP Connections, 32 MPI/PROFIBUS Connections
Power Supply	24V ± 25%, External or From Controller
Galvanic Isolation	Yes
Temperature Range	0°C...+55°C
Housing, Dimensions (W x H x D)	40.6mm x 16.7mm x 74.3mm
Weight	Approximately 40g
Approvals	CE
Protection Class	IP20
Configuration Software	NetCon S7 for Local and Remote Configuration
Supported Application Software	Softing TCPIP-S OPC Server, Softing TCPIP-I OPC Server, Softing Siemens OPC Server, Siemens STEP7, Siemens WinCC, Siemens WinCC flexible, Siemens ProTool
System Requirements	PC/PG with Windows XP, Windows 7 (32Bit and 64Bit), Windows 8 (32Bit and 64Bit), Windows Server 2003 (32Bit), Windows Server 2008 (32Bit and 64Bit), Windows Server 2008 R2, Windows Server 2012 (as of June 2013)

## SCOPE OF DELIVERY

Hardware	echolink S7-compact
Software	Installation CD-ROM
Configuration	Configuration Software NetCon S7 on Installation CD-ROM
Documentation	Documentation in Electronic Format on Installation CD-ROM

## ORDER NUMBER

GPL-CS-191000	echolink S7-compact
---------------	---------------------

## ADDITIONAL PRODUCTS AND SERVICES

LRL-DY-131201	Softing TCPIP-S OPC Server
LRL-DY-131101	Softing Siemens OPC Server

Softing Industrial Automation is a world leading provider of industrial communication products and technologies for manufacturing and process automation. Our products are tailored to the requirements of system integrators, device vendors, machine and equipment manufacturers or end users and are known for their ease-of-use and functional advantages.

Softing Industrial Automation GmbH  
Richard-Reitzner-Allee 6  
85540 Haar / Germany

Tel.: +49 89 4 56 56-340  
Fax: +49 89 4 56 56-488  
info.automation@softing.com  
<http://industrial.softing.com>